



Wind Development in Federal Waters of the OCS

Ned Farquhar
Deputy Assistant Secretary
Land and Minerals Management
U.S. Dept. of the Interior

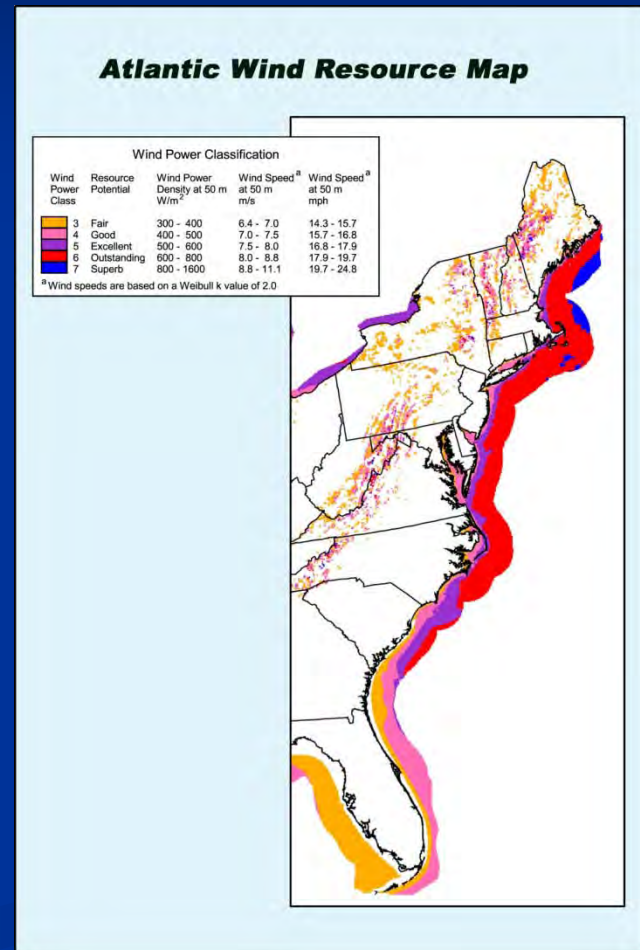
NASEO, Washington DC
February 8, 2012



Why Wind Makes Sense

■ The President's Energy Program:

- Support for renewables and job creation.
- Serve populous coastal markets with renewable electricity.
- Help reduce harmful emissions.



Types of Renewable Energy

- Wind
- Wave
- Ocean Current
- Transmission



Legal and Policy Framework

Energy Policy Act 2005 - Renewable Energy -

- Gave the Secretary of the Interior the authority to issue leases, easements, and ROWs for activity which support production, transportation, or transmission of energy from sources other than oil and gas.

Regulatory Framework -

- Regulation promulgated April 2009.
- Lease issuance, site assessment, operations, and monitoring.

Ocean Policy -

- Consistent with E.O. 13547 (July 2010), Stewardship of the Ocean, Our Coasts, and the Great Lakes.
- BOEM/NOAA Marine Multipurpose Cadastre.

Managing OCS Renewable Energy

- Intergovernmental Task Forces (12 states).
- Interagency Working Group (Deputy Secretary level—DOD, DOC, EPA, USCG, DOE, others).
- Coordination with public and across agencies (MOUs – DOE, FERC, NOAA, DOD, etc).
- Atlantic Offshore Wind Energy Consortium with the Governors' Offices.

Smart from the Start

“If we are wise with our planning, we can help build a robust and environmentally responsible offshore renewable energy program that creates jobs here at home.”
– Secretary Salazar (Nov. 23, 2010)

- Avoid high-conflict areas (task forces).
- Identify stakeholder issues (such as fisheries, navigation, viewshed, national security, protected species, historic sites).
- Identify Wind Energy Areas.



Smart from the Start

Stages of Development

- Engage task forces, stakeholders, and public throughout process.
- Environmental Review – as appropriate throughout process.
- Planning – Wind Energy Areas.
- Leasing – Exclusive right to propose a project, with a Site Assessment Plan (i.e. met tower, buoy, etc.)
- Commercial Wind Development – Construction and Operations Plan.

Where We Are Now

■ Northeast:

- Calls issued (MA, RI)
- Area of Mutual Interest (RI, MA)
- Transmission
- Deepwater (ME)

■ Mid-Atlantic:

- EA and FONSI published
- Calls issued (NJ, DE, MD, VA)
- Lease sales end of 2012 or early 2103

■ Southeast:

- NC – Call soon
- SC – Task Force soon



Ned Farquhar

202-208-6734

Ned_Farquhar@ios.doi.gov

